



GAT MONTHLY MEMBERSHIP PROGRESS REPORT

Results as of: 6/30/2022

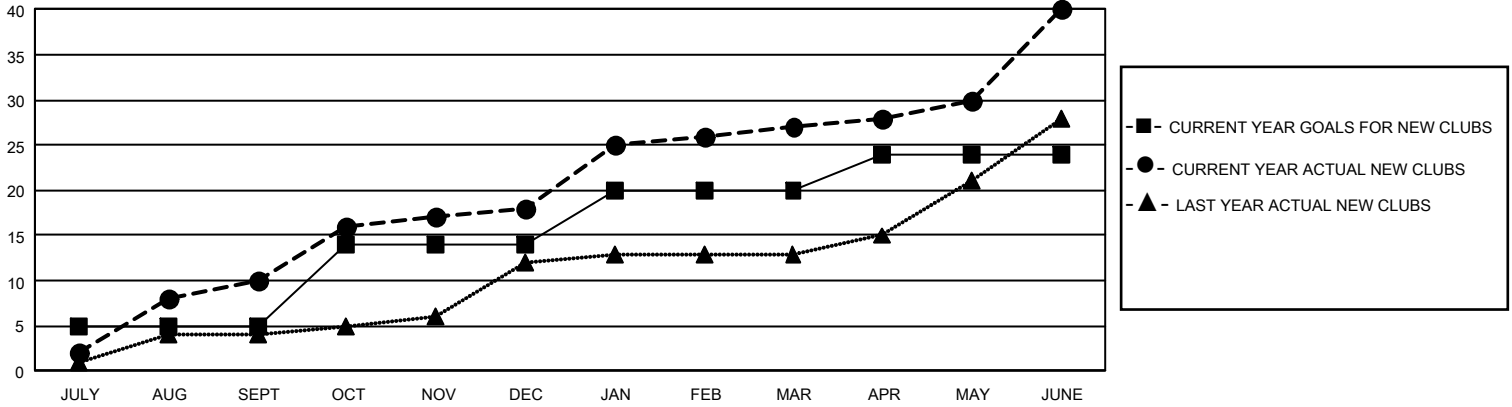
GMT Constitutional Area 5 - E, Group N

REPORT DOES NOT INCLUDE CLUBS IN UNDISTRICTED AREAS.

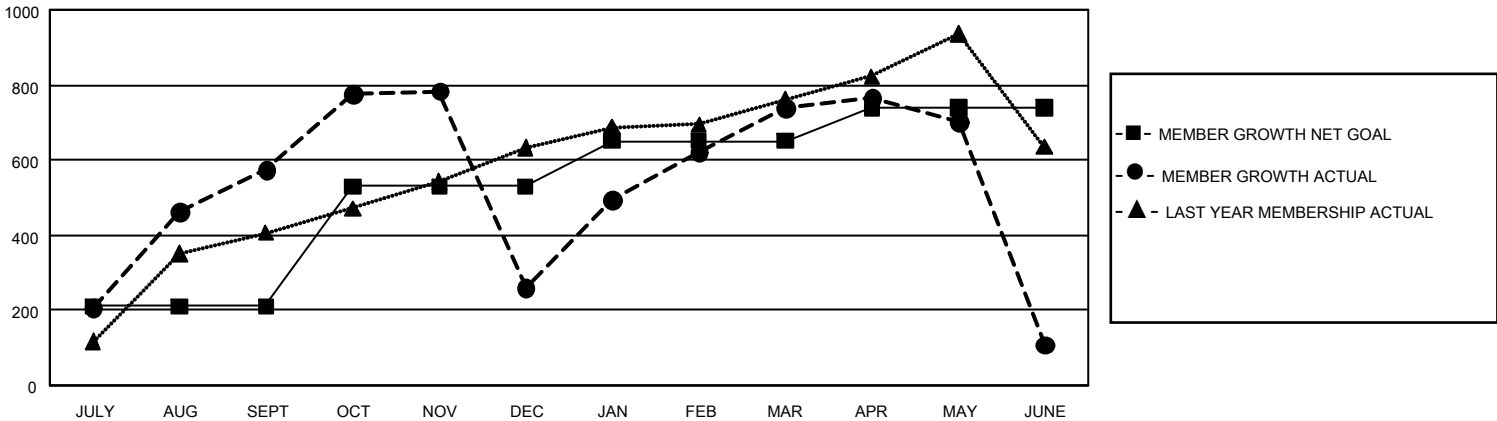
Clubs			
RESULTS FOR 2021-2022			
QUARTER	NEW CLUB GOAL	NEW CLUBS	DROPPED CLUBS
JULY/AUG/SEPT	15	10	3
OCT/NOV/DEC	27	8	3
JAN/FEB/MAR	18	9	4
APR/MAY/JUNE	12	13	7

Members			
RESULTS FOR 2021-2022			
QUARTER	MEMBER GROWTH NET GOAL	MEMBER GROWTH ACTUAL	DROPPED MEMBERS ACTUAL (including transfers)
JULY/AUG/SEPT	210	856	252
OCT/NOV/DEC	320	487	782
JAN/FEB/MAR	120	640	111
APR/MAY/JUNE	90	748	1,320

GOALS AND ACTUAL NEW CLUBS CUMULATIVE



GOALS AND ACTUAL MEMBERS CUMULATIVE



DROPPED CLUBS: 17	316 CLUBS OF 486 ADDED 1 OR MORE NEW MEMBERS	GENDER DISTRIBUTION	
		MALE 8,557 (65.79%) FEMALE 4,396 (33.80%) NON BINARY 0 (0.00%) PREFER NOT TO ANSWER 53 (0.41%)	
DROPPED MEMBERS		CLICK HERE FOR CUMULATIVE MEMBERSHIP DATA	TOTAL FAMILY UNIT MEMBERS 1,746
DECEASED 60 CLUB CANCELLED 211 OTHER 2,196 TOTAL 2,467	FAMILY MEMBERS PAYING HALF DUES 991		